

TIG 200 DC HF FV

Ref. 011540 (with accessories)

Ref. 011533 (without accessories)

This industrial TIG is designed to weld steel, stainless-steel and copper alloys. Its technology and features allow welding with extreme accuracy in TIG and with the capability to weld cellulosic electrodes in MMA.

DISPLAY

Digital control panel for an easier use.
Up to 5 memory settings to save chosen welding parameters.

TIG 200

✓ Start-Up:



Adjust
Ideal
Position

- 2 functions : HF (without contact), or TIG LIFT (with contact).
- Integrated: «Adjust Ideal Position».

The system helps you to position the electrode before the current increases. A weak intensity is delivered, acting like a « light beam » (available in 4T and 4Tlog).

✓ 3 Trigger Modes:

- 2 Times
- 4 Times
- 4 T «LOG»: The user can choose between 2 welding currents (Hot / Cold) at any time by a short press on the torch trigger.

✓ Automatic Torch Detection:

Possibility to connect a simple or double button torch, with or without built-in potentiometer.

✓ 3 Parameters - DC:

- **TIG:** Settings: pre-gas / current increase / intensity (1 or 2 current settings are possible in 4Tlog mode) / post-gas / current decrease.
- **TIG Pulse:**
 - Easy Pulse Mode: The user defines the average welding current. The machine will automatically determine the frequency and the hot/cold current.
 - Normal Mode: The user defines the hot and cold current and the pulse frequency (0.2 HZ to 20 HZ).
- **TIG SPOT:** Spot welding to prepare the piece before completing the weld.

✓ « Remote Control »:

For connection of Foot-Pedal (ref. 045682) or a remote control (ref. 045675).



Included:
- Torch SR17DB (4m)
- MMA kit

Ref. 011533 :
Without accessories

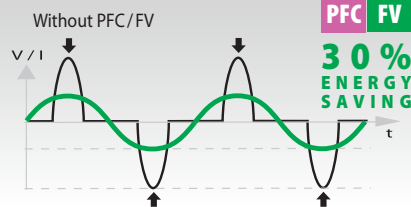
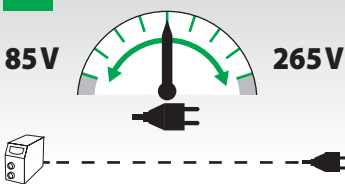


- Welds steel, stainless steel, cast iron, rutile or basic electrodes.
- The product features Anti-Sticking, Hot Start and Adjustable Arc Force.

HIGH-TEC POWER SUPPLY

PFC POWER FACTOR CORRECTION

FV FLEXIBLE VOLTAGE



The TIG 200 DC has a powerful integrated PFC and features FLEXIBLE VOLTAGE (85-265V).

The TIG 200 will function on a standard 230V-13A / 110V- 32A, even during intensive use with long extension leads (100m).

	50/60hz	-AM-	I ₂			EN60974-1 (40°C)		U ₀	cm/kg	Protected & compatible POWER GENERATOR (+/- 15%)	
			TIG AC	TIG DC	MMA	I _A (60%)	X% (I ₂ max)				
	230V 1~	13A	-	5-200A	10-200A	140A	30%	76V	35/50	42x15x31 / 12	7 kW 8.75 kVA
	110V 1~	32A		5-180A	10-120A	115A	26%				