

PROFESSIONAL MACHINERY.

SOLD TO PROFESSIONALS, BY PROFESSIONALS.

Workshop Press is a premier distributor of top quality European Metalworking Machinery Brands such as RHTC Hydraulic Presses, Merkle Welding Devices, Scantool Metalworking Machinery and GYS Welding Equipment.



NATIONWIDE
DELIVERY



CE CERTIFIED
ALL MACHINES



INTEGRATIONS
CUSTOMISED SOLUTIONS



PROFI-PRESS
UK DISTRIBUTOR

Press	30 TON MH 2	60 TON MH MC2	100 TON MH MC 2	100 TON MH MC 2 1500	160 TON MH MC 2	160 TON MH MC 2 1500	200 TON MH MC 2	300 TON MH MC 2 1750
Reference Number	PP10014	PP10028	PP10058	PP10061	PP10083	PP10084	PP10085	PP10090
Technical Specifications								
Force [kN]:	294	588	981	981	1570	1570	1962	2943
Pressure max. [bar]:	221	259	258	258	255	255	243	260
Stroke [mm]:	380	380	380	380	400	400	400	480
Oil delivery [litre/min]:	2.82 / 11.84	2.82 / 11.84	5.64/17.2	5.64/17.2	7.1/27.6	7.1/27.6	7.1/27.6	12/33
Oil capacity [litres]:	37	41	46	46	57	57	64	100
Speed Advance/ Work /Return [mm/sec]:	4 / 10 / 18	2 / 9 / 11	2 / 8 / 10	2 / 8 / 9	2 / 7 / 9	2 / 7 / 9	2 / 6 / 7	2 / 5 / 6
Motor [kW]:	2	2	2	2	3	3	3	6
Power Requirement [V / Ph / Hz]	400 / 3 / 50	400 / 3 / 50	400 / 3 / 50	400 / 3 / 50	400 / 3 / 50	400 / 3 / 50	400 / 3 / 50	400 / 3 / 50
Frequency [hz]:	50	5v0	50	50	50	50	50	50
RPM [rpm]:	3000	3000	3000	3000	3000	3000	3000	2800
Insulation protection [IP]:	54	54	54	54	54	54	54	54
Insulation classification:	I	I	I	I	I	I	I	I
Movable cylinder:	No	Yes	Yes	Yes	Yes	Yes	Yes	Yes
Speeds	2	2	2	2	2	2	2	2
Working width [mm]:	750	750	1100	1500	1100	1500	1300	1750
Weight [kg]:	385	540	970	1145	1195	1430	1690	3150
Diameters: Inside / Piston Rod / Piston Head	130 / 55 / 80	170 / 75 / 100	220 / 90 / 120	220 / 90 / 120	280 / 125 / 160	280 / 125 / 160	325 / 140 / 175	380 / 180 / 215
A, B, C [L x W x H]	2120 x 1000 x 695	2120 x 1000 x 695	2140 x 1350 x 755	2080 x 1750 x 755	2200 x 1410 x 825	2270 x 1810 x 825	2270 x 1610 x 865	2250 x 2120 x 985
D	750	750	1100	1500	1100	1500	1300	1750
E	260	260	300	300	380	380	410	500
F	1315	1315	1665	2065	1725	2125	1925	2550
G	150	150	150	150	150	150	150	177
H	200	197	180	130	180	180	180	180
I	750	750	750	750	750	750	750	531
J	805	805	865	865	935	935	975	1085
K	160	200	250	250	325	325	368	420

Press

	15 TON HF 2	30 TON HF2	50 TON HF2
Reference Number	PP10009	PP10010	PP10011
Technical Specifications			
Force [kN]:	147.2	294.3	490.5
Pressure max. [bar]:	382.2	374.6	399.4
Stroke [mm]:	160	160	160
Oil capacity [litres]:	1.7	1.7	2.5
Movable cylinder:	No	Yes	Yes
Working width [mm]:	560	565	750
Weight [kg]:	117	165	309
Diameter: Cylinder /Piston Rod / Piston Head:	82 / 40 / 50	115 / 40 / 50	140 / 50 / 60
Hand and Foot Operated	Yes	Yes	Yes
Pressure Manometer:	Yes	Yes	Yes
Chromed Piston Rod:	Yes	Yes	Yes
Automatic Piston Return:	Yes	Yes	Yes
V-Block Set Included:	Yes	Yes	Yes
A, B, C [L x W x H]	1880 x 680 x 600	2010 x 685 x 643	2025 x 910 x 764
D	560	565	750
E	190	230	300
F	828	836	1085
G	100	115	115
H	118	162	140
I	900	920	920
J	214	255	336
K	82	115	140



BROACHING PRESS MODEL

150 TON

Technical Specifications

Pressure force	[kN]	147
Maximum pressure	[bar]	232
Piston stroke	[mm]	600
Oil delivery	[ltr/min]	11.8
Oil capacity	[dm ³]	35
Working speed	[mm/sec]	0 - 30
Approaching speed	[mm/sec]	0 - 30
Return speed	[mm/sec]	0 - 40
Motor power	[kW]	5.5
Voltage	[V]	400/3
Frequency	[Hz]	50/60
Revolutions per minute	[rpm]	1500
Insulation protection	[IP]	54
Insulation classification		I
Weight	[kg]	305
Diameters		
Diameter of cylinder	[mm]	90
Diameter of piston rod	[mm]	50
Diameter of piston head	[mm]	80



PPCF Series C-Frame Presses Model	PPCF-80	PPCF-100	PPCF-150
Article Number	10135	10136	10137
Technical specifications			
Force [tn]:	80	100	150
Motor power [kW]:	7.5	7.5	7.5
Throat depth [mm]:	340	375	400
Working speed [mm/s]:	9	8	5.1
Approaching speed [mm/s]:	108	108	69
Return speed [mm/s]:	155	155	101
Maximum pressure [bar]:	290	290	290
Piston stroke [mm]:	450	450	450
Guides diameter [mm]:	50	50	50
Lower table [mm]:	800 x 550	850 x 600	900 x 650
Upper table [mm]:	650 x 400	700 x 450	750 x 500
Max. Vertical Daylight [mm]:	650	650	650
Working height [mm]:	850	900	950
Length x Width x Height [mm]:	600 x 850 x 1500	650 x 900 x 1950	650 x 950 x 2135
Features			
Siemens Simatic NC Controller	Yes	Yes	Yes
Upper / Lower Table:	Yes / Yes	Yes / Yes	Yes / Yes
Side Screens / Light Curtains Level 4:	Yes	Yes	Yes
Light Curtains Level 4:	Yes	Yes	Yes
Working Table T-Grooves:	DIN-650	DIN-650	DIN-650
Cylinder stroke adjustment:	NCControlled	NCControlled	NCControlled
Cylinder speeds:	NCControlled	NCControlled	NCControlled
Foot Pedal Operation:	Yes	Yes	Yes



PPCF Series

- 80, 100, 150 Tons
- Siemens NC Controller
- Upper Slidve Table
- Lower Bolster Table
- DIN 650 T-Slots
- Foot Pedal Operation

PPCM Series C-Frame Presses	PPC-28	PPCM-50	PPCM-80	PPCM-100	PPCM-150
Article Number	10010	10110	10115	10120	10125
Technical specifications					
Force [tn]:	28	50	80	100	150
Motor power [kW]:	4	4	6	8	8
Throat depth [mm]:	225	265	290	325	375
Working speed [mm/s]:	2 to 9.8	6,3	6	6	4
Approaching speed [mm/s]:		32	25	31	20
Return speed [mm/s]:	20	42	36	48	31
Maximum pressure [bar]:	320	320	320	320	320
Piston stroke [mm]:	150	250	250	250	250
Guides diameter [mm]:		50	50	50	50
Lower table [mm]:	325 x 300	700 x 450	700 x 500	800 x 550	900 x 650
Upper table [mm]:	N/A	550 x 300	600 x 350	650 x 400	700 x 450
Max. Vertical Daylight [mm]:	250	400	400	400	400
Working height [mm]:		850	850	900	950
Length x Width x Height [mm]:	600 x 550 x 2000	1290 x 1160 x 2285	1460 x 1210 x 2090	1590 x 1240 x 2250	1750 x 1330 x 2395

Features					
Upper / Lower Table:	No / Yes	Yes / Yes	Yes / Yes	Yes / Yes	Yes / Yes
Side Protection Screens:	No	Yes	Yes	Yes	Yes
Light Curtains Level 4:	No	Yes	Yes	Yes	Yes
Working Table T-Grooves:	No	DIN-650	DIN-650	DIN-650	DIN-650
Cylinder stroke adjustment:	NC Controlled	EoS Switch	EoS Switch	EoS Switch	EoS Switch
Cylinder speeds:	Variable	2	2	2	2
Pressure Switch Manometer:	N/A	Yes	Yes	Yes	Yes
Foot Pedal Operation:	Yes	Yes	Yes	Yes	Yes



PPCM Series

- 28, 50, 80, 100, 150 Tons
- Upper Slide Table
- Lower Bolster Table
- DIN 650 T-Slots
- Foot Pedal Operation

Presses	PPCT-30	PPCT- 60	PPCT- 100	PPCT- 150	PPCT- 200	PPCT- 250
---------	---------	----------	-----------	-----------	-----------	-----------

Technical specifications

Force [tn]:	30	60	100	150	200	250
Motor power [kw]:	8	8	11	11	15	15
Working speed [mm/sec]:	10	10	10	8	10	10
Approach speed [mm/sec]:	100	100	100	110	125	125
Return speed [mm/sec]:	150	150	160	150	180	180
Maximum pressure [bar]:	250	250	250	250	250	250
Piston stroke [mm]:	400	400	400	400	400	400
Table size [mm]:	500 x 500	500 x 500	800 x 500	900 x 600	900 x 600	1000 x 600
Max. day light [mm]:	500	500	500	600	600	600
Total length [mm]:	1500	1500	1600	2100	2100	2100
Total width (frontal) [mm]:	1400	1400	1700	1800	1800	1900
Overall height [mm]:	2600	2600	2930	3400	3400	3600
Weight [kg]:	2500	3500	5500	12000	13000	14000

Features

Chrome Plated Cylinder	•	•	•	•	•	•
Steel Welded Frame	•	•	•	•	•	•
T-Slots in Table (DIN 508/650)	•	•	•	•	•	•
One Main/Two Auxillary Cylinder	•	•	•	•	•	•
Side Screens/Integrated Light Curtains	•	•	•	•	•	•
HMI Touchscreen	•	•	•	•	•	•
Palm Button Control	•	•	•	•	•	•

Press	PPCD-25	PPCD-50	PPCD-80	PPCD-100	PPCD-150
Reference Number	10100	10101	10102	10103	10104
Technical specifications					
Force [tn]:	25	50	80	100	150
Motor power [kW]:	2	4	4	6	8
Throat depth [mm]:	250	265	290	325	375
Working speed [mm/s]:	3	6	4	5	4
Approaching speed [mm/s]:	21	31	19	21	20
Return speed [mm/s]:	28	42	28	32	30
Maximum pressure [bar]:	160	320	320	320	320
Piston stroke [mm]:	250	250	250	250	250
Lower table [mm]:	400 x 400	450 x 450	500 x 500	550 x 550	650 x 650
Max. Vertical Daylight [mm]:	400	400	400	400	400
Working height [mm]:	850	850	850	900	950
Length x Width x Height [mm]:	960	1170	1330	1470	1660
Width [mm]:	740	740	780	850	900
Height [mm]:	2090	2080	2090	2155	2295
Weight [kg]:	950	1480	1750	2500	3750
Features					
Side Protection Screens:	Yes	Yes	Yes	Yes	Yes
T-Grooves (Lower Bolster Table):	Yes	Yes	Yes	Yes	Yes
Cylinder with threaded end:	Yes	Yes	Yes	Yes	Yes
Cylinder stroke adjustment:	EoS	Switch	EoS	Switch	EoS
Manual/Semi-Auto Work Mode:	Yes	Yes	Yes	Yes	Yes
Cylinder speeds:	2	2	2	2	2
Pressure Switch Manometer:	Yes	Yes	Yes	Yes	Yes
Push Button (2 Hands):	Yes	Yes	Yes	Yes	Yes



PPCD Series

- 25, 50, 80, 100, 150 Tons
- Upper Ram that is Threaded
- Bolster Table (Bottom with T-Slots)
- Palm Button Operation

	PPE-30	PPE-40	PPE-4-40	PPE-4-60	PPE-4-80	PPE-4-100	PPE-4-125 PPE-6-125	PPE-4-160 PPE-6-160	PPE-4-200 PPE-6-200	PPE-4-250 PPE-6-250	PPE-4-315 PPE-6-315
--	--------	--------	----------	----------	----------	-----------	------------------------	------------------------	------------------------	------------------------	------------------------

Technical Specifications

Pressure force [tn]:	30	40	40	60	80	100	125	160	200	250	315
Guided Ram [qty]:	n/a	n/a	4	4	4	4	4 / 6	4 / 6	4 / 6	4 / 6	4 / 6
Motor power [kw]:	2,2	3	3	4	6	8	11	11	15	19	22
Throat depth [mm]:	180	220	220	235	250	280	300 / 325	350	400	450	450
Strokes per minute [spm]:	125	125	60	60	60	50	50 / 55	45 / 50	40 / 45	40 / 45	35 / 40
Stroke adjustment [mm]:	10 - 75	10 to 90	10 to 90	10 to 100	10 to 115	10 to 135	10 to 135	20 to 150	20 to 170	20 to 180	20 to 200
Max. closed mould height [mm]:	225	250	250	270	285	315	315	350	430	420	400
Distance between table and ram [mm]:	300	340	340	370	400	450	450	500	600	600	600
Ram adjustment [mm]:	50	50	50	50	50	60	60	70	80	80	90
Table size [mm]:	360 x 560	440 x 640	440 x 640	470 x 700	500 x 750	560 x 860	600 x 900 / 650 x 1000	700 x 1100	800 x 1200	900 x 1200	900 x 1200
Ram size [mm]:	260 x 340	280 x 380	280 x 380	310 x 410	340 x 440	420 x 520	315 x 550 / 460 x 700	370 x 620 / 520 x 700	400 x 700 / 550 x 760	400 x 700 / 600 x 900	400 x 700 / 620 x 900
Table height [mm]:	670	670	670	670	700	800	800 / 900	950 / 920	950 / 1000	950 / 1000	950 / 1000
Ø hole in the table [mm]:	140	170	170	190	220	250	250 / 260	280	300	310	320
Ø hole in the ram [mm]:	35	40	40	40	45	50	50	55	60	65	70
Total width (frontal) [mm]:	1100	1300	1220	1230	1400	1630	1650 / 1800	1860 / 1950	2130 / 2280	2200 / 2270	2280 / 2270
Total length [mm]:	1300	1400	1370	1460	1500	1640	1680 / 1760	1800 / 1950	2100 / 2200	2100 / 2200	2150 / 2200
Overall height [mm]:	2000	2000	2200	2350	2500	2760	2870 / 3150	3200 / 3350	3250 / 3750	3280 / 3750	3450 / 3800

Features

Central Motorized Lubrication	•	•	•	•	•	•	•	•	•	•	•
Hydraulic Overload Protection	•	•	•	•	•	•	•	•	•	•	•
Electro-pneumatic clutch / brake combo	•	•	•	•	•	•	•	•	•	•	•
Clutch Dual Safety Solenoid Valve	•	•	•	•	•	•	•	•	•	•	•
Comp. Tank, Reg.-lube Filter, Pressure Control	•	•	•	•	•	•	•	•	•	•	•
Sid screens w/Safety light guards	•	•	•	•	•	•	•	•	•	•	•
Programmable control system (PLC)	•	•	•	•	•	•	•	•	•	•	•
Adjustable stroke	•	•	•	•	•	•	•	•	•	•	•
Anti-vibration pads	•	•	•	•	•	•	•	•	•	•	•
Palm Button / Foot pedal Controls	•	•	•	•	•	•	•	•	•	•	•

Optional accessories

Ejector Pneumatic / Hydraulic	•	•	•	•	•	•	•	•	•	•	•
Cushion Pneumatic / Hydraulic	•	•	•	•	•	•	•	•	•	•	•
Lower auxiliary table	•	•	•	•	•	•	•	•	•	•	•
Bespoke Dimensions	•	•	•	•	•	•	•	•	•	•	•
Strain gauge system	•	•	•	•	•	•	•	•	•	•	•
NC digital display with memories	•	•	•	•	•	•	•	•	•	•	•



Cambering Presses Model	PPHV-150	PPHV-220	PPHV-300
Article Number	10200	10205	10210
Technical specifications			
Force [tn]:	150	220	300
Motor Power [kW]:	4	6	8
Throat depth [mm]:	300	330	405
Working speed [mm/sec]:	2	2	2
Approaching speed [mm/sec]:	10	9	10
Return speed [mm/sec]:	15	16	16
Maximum pressure [bar]:	320	320	320
Piston stroke [mm]:	450	450	450
Guides diameter [mm]:	50	60	60
Daylight Vertical [mm]:	700	800	900
Back Table dimensions [mm]:	2000 x 5000	2500 x 600	2500 x 750
Pushing Table dimensions [mm]:	500 x 500	600 x 600	750 x 750
Two blocks support table [mm]:	100 x 100 x 500	120 x 120 x 600	150 x 150 x 750
One block main table [mm]:	100 x 100 x 500	120 x 120 x 600	150 x 150 x 750
Working height [mm]:	900	950	950
Length x Width x Height [mm]:	2520 x 2000 x 1570	2800 x 2500 x 1700	3200 x 2500 x 1840
Weight [kg]:	6,700	11,150	13,300
Technical specifications			
Large supporting back table	Yes	Yes	Yes
Pushing main table	Yes	Yes	Yes
Support blocks (moveable)	Yes	Yes	Yes
Adjustable rollers (both sides)	Yes	Yes	Yes
4x cylindrical lateral guides	Yes	Yes	Yes
Adjustable end-stroke switches	Yes	Yes	Yes
Manual / Semi-auto modes	Yes	Yes	Yes
Two speeds	Yes	Yes	Yes
Pressure regulator	Yes	Yes	Yes
Manometer	Yes	Yes	Yes
Built in Europe	Yes	Yes	Yes
CE Certified	Yes	Yes	Yes



Presses	PPMVS-100	PPMVS-160	PPMVS-200	PPMVS-250	PPMVS-300	PPMVS-400	PPMVS-2-300	PPMVS-2-400	PPMVS-2-500	PPMVS-2-630	PPMVS-2L-300	PPMVS-2L-400	PPMVS-2L-500	PPMVS-2L-630
---------	-----------	-----------	-----------	-----------	-----------	-----------	-------------	-------------	-------------	-------------	--------------	--------------	--------------	--------------

Technical specifications

Pressure force [tn]:	100	160	200	250	300	400	300	400	500	630	300	400	500	630
Motor power [kw]:	11	15	19	19	22	30	30	37	45	55	30	37	45	55
Strokes per minute [spm]:	60	50	40	40	40	30	30 to 40	30 to 40	20 to 30	20 to 30	30 to 40	30 to 40	20 to 30	20 to 30
Cylinder stroke [mm]:	20 to 150	20 to 150	20 to 150	20 to 150	20 to 200	20 to 200	250	250	250	250	200	200	200	200
Shut height [mm]:	350	400	450	500	500	500	550	600	600	600	550	600	600	600
Table to ram [mm]:	500	550	600	650	700	700	800	800	850	850	750	750	800	800
Ram adjustment [mm]:	0 to 80	0 to 100	0 to 120	0 to 120	0 to 120	0 to 140	0 to 120	0 to 120	0 to 140	0 to 140	0 to 120	0 to 120	0 to 140	0 to 140
Table size [mm]:	900 x 1000	1000 x 1000	1000 x 1200	1100 x 1200	1100 x 1300	1100 x 1300	1300 x 2500	1300 x 2500	1300 x 2500	1300 x 2500	1300 x 2800	1300 x 2800	1300 x 2800	1300 x 2800
Ram size [mm]:	900 x 1000	1000 x 1000	1000 x 1200	1100 x 1200	1100 x 1300	1100 x 1300	1300 x 2500	1300 x 2500	1300 x 2500	1300 x 2500	1300 x 2800	1300 x 2800	1300 x 2800	1300 x 2800
Table height [mm]:	900	950	1000	1000	1000	1100	900	1000	1100	1100	900	1000	1100	1100
Total length [mm]:	1950	2050	2100	2150	2150	2200	2500	2500	2600	2600	2500	2500	2600	2600
Total width (frontal) [mm]:	2250	2450	2550	2700	2800	2850	3300	3400	3500	3600	3600	3700	3800	3900
Overall height [mm]:	4200	4350	4700	4750	5000	5200	4900	5100	5350	5600	4900	5100	5350	5600

Features

Prismatic & Sliding Guides	•	•	•	•	•	•	•	•	•	•	•	•	•	•
Central Motorized Lubrication System	•	•	•	•	•	•	•	•	•	•	•	•	•	•
Hydraulic Overload Protection	•	•	•	•	•	•	•	•	•	•	•	•	•	•
Slide/Die Balance: 2 Pneumatic Cylinders	•	•	•	•	•	•	•	•	•	•	•	•	•	•
Electro-pneumatic Clutch/Brake: Dual Solenoid Valve	•	•	•	•	•	•	•	•	•	•	•	•	•	•
Electro-pneumatic Clutch/Brake: Compensation Tank	•	•	•	•	•	•	•	•	•	•	•	•	•	•
Electro-pneumatic Clutch/Brake: Regulator Lubrication	•	•	•	•	•	•	•	•	•	•	•	•	•	•
Electro-pneumatic Clutch/Brake: Pressure Control Switch	•	•	•	•	•	•	•	•	•	•	•	•	•	•
Eccentric Gearing: Double Speed Reduction	•	•	•	•	•	•	•	•	•	•	•	•	•	•
Eccentric Gearing: Long Strokes	•	•	•	•	•	•	•	•	•	•	•	•	•	•
Level IV safety light guards	•	•	•	•	•	•	•	•	•	•	•	•	•	•
Programmable control system (PLC)	•	•	•	•	•	•	•	•	•	•	•	•	•	•
Automatic ram adjustment	•	•	•	•	•	•	•	•	•	•	•	•	•	•
Shut Height Indicator	•	•	•	•	•	•	•	•	•	•	•	•	•	•
Mechanical Rotary Cam Limit Switch	•	•	•	•	•	•	•	•	•	•	•	•	•	•
Magnetic Cam Limit Switch	•	•	•	•	•	•	•	•	•	•	•	•	•	•
Inverter	•	•	•	•	•	•	•	•	•	•	•	•	•	•
Anti-vibration Pads	•	•	•	•	•	•	•	•	•	•	•	•	•	•
Palm Button/Foot Pedal Control	•	•	•	•	•	•	•	•	•	•	•	•	•	•

Optional accessories

Inverter (speed variation)	•	•	•	•	•	•	•	•	•	•	•	•	•	•
Ejector/Cushion (Pneumatic or hydraulic)	•	•	•	•	•	•	•	•	•	•	•	•	•	•
Lower Auxiliary Table	•	•	•	•	•	•	•	•	•	•	•	•	•	•
Strain Gauge System	•	•	•	•	•	•	•	•	•	•	•	•	•	•
NC Digital Display w/Program Storage	•	•	•	•	•	•	•	•	•	•	•	•	•	•



Presses

HDDT-100

HDDT-200

HDDT-300

HDDT-400

HDDT-500

HDDT-600

Technical specifications

Force [tn]:	100	200	300	400	500	600
Motor power [kw]:	22	22	22	30	30	37
Working speed [mm/sec]:	15	8	10	10	8	15
Approaching speed [mm/sec]:	100	100	100	100	100	100
Return speed [mm/sec]:	140	140	140	140	140	110
Piston stroke [mm]:	1000	1000	1000	1000	1000	1000
Table size [mm]:	800 x 1000	800 x 1000	1000 x 1200	1200 x 1400	1200 x 1500	1500 x 1700
Max. day light [mm]:	1000	1000	1000	1000	1000	1000
Hydraulic cushion [tn]:	40	65	130	150	200	250
Hydraulic cushion stroke [mm]:	300	300	300	300	300	300
Total length [mm]:	2200	2200	2400	2600	2600	3000
Total width (frontal) [mm]:	2100	2100	2300	2500	2500	2800
Overall height [mm]:	4100	4200	4500	4700	4900	5500
Weight [kg]:	9000	12000	17000	23000	26000	33000

Features

Chrome Plated Cylinder	•	•	•	•	•	•
Steel Welded Frame	•	•	•	•	•	•
T-slotted tables (DIN 508/650)	•	•	•	•	•	•
Main Cylinder & Hydraulic Cushion	•	•	•	•	•	•
Light Curtains (Frontal)	•	•	•	•	•	•
HMI Touch Screen Control	•	•	•	•	•	•
Programmable Pressure, Stroke, Time	•	•	•	•	•	•
Lubrication System	•	•	•	•	•	•
Oil Pressure Gauge	•	•	•	•	•	•
Palm Button Operation	•	•	•	•	•	•

Press	PPMV-50	PPMV-80	PPMV-100	PPMV-150	PPMV-220	PPMV-300
Reference Number	10150	10155	10160	10165	10170	10175
Technical Specifications						
Force [tn]:	50	80	100	150	220	300
Motor power [kW]:	4	6	8	8	11	11
Working speed [mm/sec]:	6	6	6	4	4	3
Approaching speed [mm/sec]:	32	25	31	20	17	13
Return speed [mm/sec]:	42	36	48	31	30	18
Piston stroke [mm]:	450	450	450	450	450	450
Guides diameter [mm]:	60	80	100	120	120	150
Table size [mm]:	750 x 620	900 x 850	1,050 x 950	1,050 x 950	1,200 x 950	1,300 x 1,100
Between columns [mm]:	750 x 410	900 x 600	1,050 x 650	1,050 x 950	1,200 x 590	1,300 x 570
Vertical Daylight [mm]:	600	600	650	700	750	800
Working height [mm]:	750	800	800	800	900	900
Total Length	1,020	1,330	1,430	1,490	1,450	1,500
Total Width	1,470	1,680	1,880	1,940	2,240	2,650
Total height [mm]:	2,650	2,680	2,780	2,885	3,125	3,250
Weight [kg]:	3,200	3,400	4,300	5,580	8,500	10,800



Horizontal Press Brake	HB-28 NC	HPB-10 HPB-10-NC	HPB-20 HPB-20-NC	HPB-30 HPB-30-NC	HPB-40 HPB-40-NC	HPB-50 HPB-50-NC	HPB-80 HPB-80-NC	HPB-100 HPB-100-NC
Article number	HB10011	--	--	--	--	--	--	--
Technical Specifications								
Max Pressure [tons]:	28	10	20	30	40	50	80	100
Pressure max. [bar]:	200	200	200	200	200	200	200	250
Oil Tank Capacity [litres]:	40	12	12	40	40	120	120	120
Bending capacity flat steel [mm]:	200 x 10	150 x 8	200 x 12	200 x 18	200 x 24	on request	on request	on request
Bending Capacity Round Tubes [mm]:	--	42 x 3.2	48 x 4.0	60 x 4.0	60 x 5.0	on request	on request	on request
Piston stroke [mm]:	180	185	200	285	285	285	285	285
Diameter of Pins[mm]:	--	60	80	80	80	105	105	105
Height of Tooling [mm]:	--	150	200	250	250	300	300	300
Working Speed [mm/sec]:	10	10	10	10	10	10	10	10
Return speed [mm/sec]:	20	10	10	10	10	10	10	10
Motor power [kW]:	4	1.1	2.2	3	4	10	10	10
Weight [kg]:	800	250	530	1050	1050	1700	1700	1700
Useful table size (L x W) [mm]:	300 x 550	450 x 900 x 38	480 x 1060 x 48	660 x 1250 x 48	660 x 1250 x 48	750 x 1425 x 58	750 x 1425	750 x 1425
Cylinder stroke [mm]:	180	915	930	930	930	930	930	930
Side Stop Length [mm]:	300	300	300	300	300	300	300	300
Total length [mm]:	1150	900	1150	1250	1250	1430	1430	1430
Width of the Machine [mm]:	--	450	480	650	650	750	750	750
Total height [mm]:	1103	1130	1200	1250	1250	1450	1450	1450
Size of Packing (LxWxH) [mm]:	--	1000 x 500 x 1500	600 x 1150 x 1700	700 x 1280 x 1750	700 x 1280 x 1750	1500 x 750 x 1800	1500 x 750 x 1800	1500 x 750 x 1800
Features								
NC Controller (NC Models)	Schneider - Colour Touchscreen – 145mm	Delta - 110 mm	Delta - 110 mm	Delta - 110 mm	Delta - 110 mm	Delta - 110 mm	Delta - 110 mm	Delta - 110 mm
NC Controller Programs (NC Models)	100 Programs 10 Steps each	99 Programs 15 Steps	99 Programs 15 Steps	99 Programs 15 Steps	99 Programs 15 Steps	99 Programs 15 Steps	99 Programs / 15 Steps	99 Programs / 15 Steps
V Bend Die	V-Die Post	5 mm radius	5 mm radius	5 mm radius	5 mm radius	5 mm radius	5 mm radius	5 mm radius
V Die	Multi-Vee	65 mm opening 5 mm radius	65 mm opening 5 mm radius	65 mm opening 5 mm radius	65 mm opening 5 mm radius	65 mm opening 5 mm radius	65 mm opening 5 mm radius	65 mm opening 5 mm radius
Speed Adjustable	•	•	•	•	•	•	•	•
Bend / Return Position programmable	•	•	•	•	•	•	•	•
Manual / Automatic Mode Selector	•	•	•	•	•	•	•	•
Pressure Adjustment	•	•	•	•	•	•	•	•
Pressure manometer	•	•	•	•	•	•	•	•
Worktable Degree Markings	•							
Back gauge	•	•	•	•	•	•	•	•
Mounting Pins	3	2	2	2	2	2	2	2
Tool Holder Pin	--	•	•	•	•	•	•	•
Tie Bar	•	•	•	•	•	•	•	•

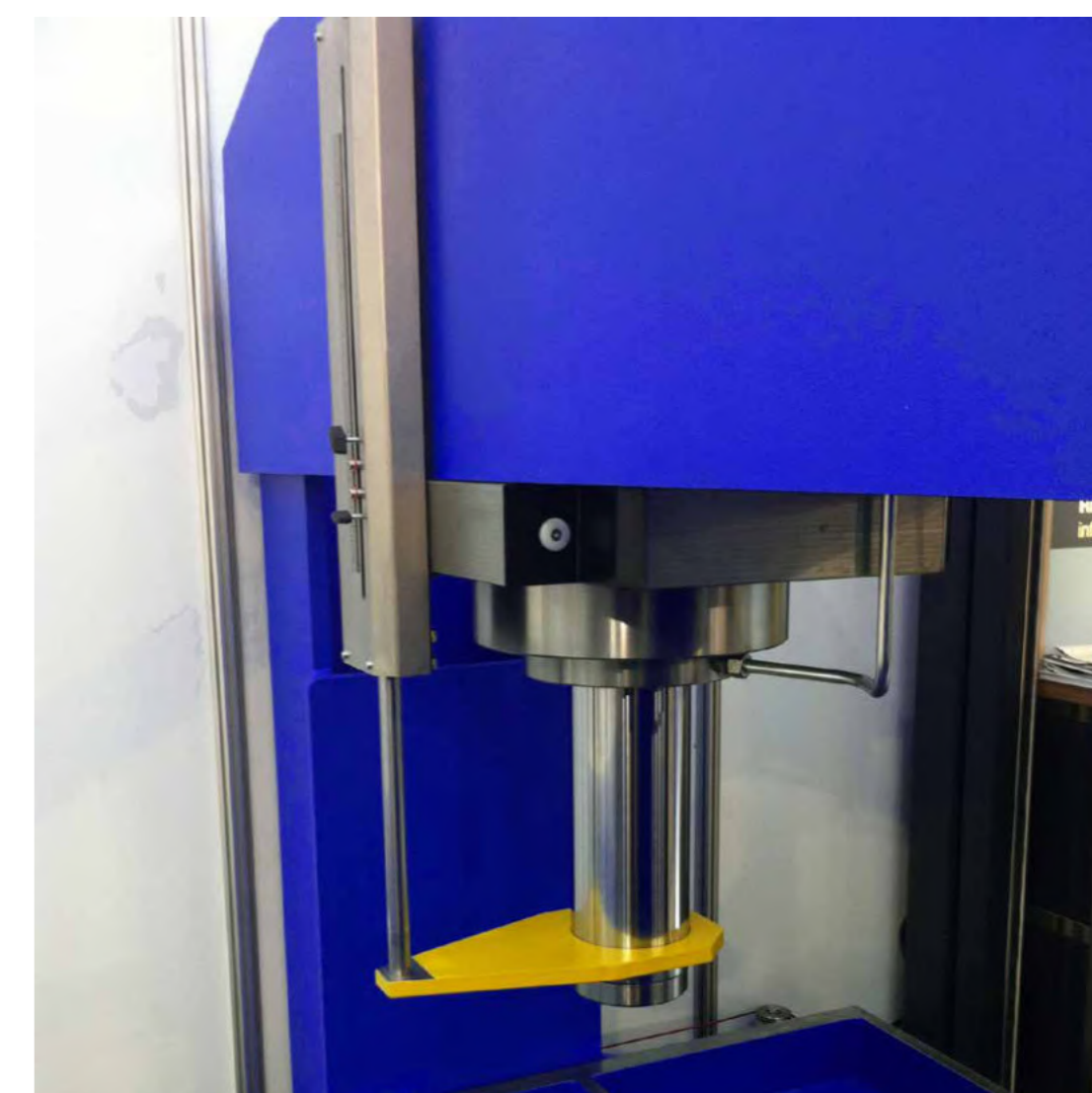
Capacity Chart

Manual Portal Presses Model Article Number	PPTL-100 PP20058	PPTL-160 PP20083
Technical specifications		
Pressure force [kN]:	981	1570
Pressure max. [bar]:	258	255
Cylinder stroke (with cylinder extension) [mm]:	380	400
Press speed [mm/sec]:	2	2
Cylinder lowering speed [mm/sec]:	8	7
Return speed [mm/sec]:	9	9
Motor [kW]:	2	3
Voltage [V]:	Yes	Yes
Speeds (incl. pressure regulation)	2	2
Table size (L x W) [mm]:	1740 x 996	1740 x 996
Working width [mm]:	1100	1100
Vertical light [mm]:	700	700
Working height [mm]:	720	760
Total height [mm]:	2034	2104
Total length [mm]:	1740	1740
Total width [mm]:	1670	1725
Weight [kg]:	1650	2185
Features		
Movable cylinder	Yes	Yes
Movable portal	Yes	Yes
Integrated pressure manometer	Yes	Yes
Pressure regulation	Yes	Yes



Motorised Portal Presses Model	TL-150	TL-220	TL-300
Article Number	10095	10098	10099
Technical specifications			
Force [tn]	150	220	300
Motor power [kW]	4	6	8
Piston stroke [mm]	450	450	450
Maximum pressure [bar]	320	320	315
Approaching speed [mm/sec]	10	9	10
Work speed [mm/sec]	2	2	2
Return speed [mm/sec]	15	16	15
Weight [kg]	6500	9400	13,400

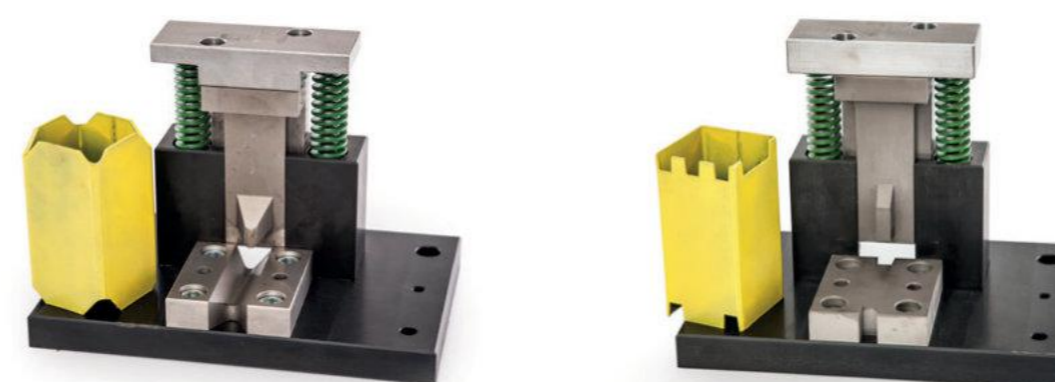
Features			
Table Size (L x W) mm	3000 x 1565	3500 x 2045	4000 x 2545
Horizontal Daylight Distance between beams [mm]	1565	2060	2560
Vertical Daylight Cylinder head to table [mm]	700	700	700
Headstock movement L/R [mm]	1100	1550	2000
Frame movement front to back [mm]	2150	2500	3000
Working height [mm]	600	700	750
Total length [mm]	3250	3760	4280
Total width [mm]	2500	3200	3660
Total height [mm]	2550	2990	3120



Production Presses Model	PPRM-80	PPRM-100	PPRM-150	PPRM-220	PPRM-300	PPRM-500
Article Number	10500	10505	10510	10515	10520	10525
Technical specifications						
Force [tn]:	80	100	150	220	300	500
Motor power [kW]:	6	8	8	11	11	15
Working speed [mm/sec]:	6	6	4	4	3	2
Approaching speed [mm/sec]:	25	30	20	17	13	10
Return speed [mm/sec]:	36	48	30	30	19	17
Maximum pressure [bar]:	320	320	320	320	320	320
Piston stroke [mm]:	250	250	250	300	300	500
Guides diameter [mm]:	50	50	50	60	60	80
Lower table size [mm]:	700 x 500	700 x 500	750 x 550	800 x 600	850 x 650	1000 x 850
Upper table size [mm]:	600 x 450	600 x 450	650 x 500	700 x 550	750 x 600	1000 x 800
Maximal Vertical Daylight [mm]:	400	400	400	500	500	700
Horizontal (Frontal) light [mm]:	800	800	850	900	950	1,150
Working height [mm]:	900	900	950	1,000	1,000	1,000
Total length [mm]:	1,025	1,075	1,110	1,195	1,225	1,470
Total width [mm]:	1,500	1,525	1,750	1,875	2,025	2,585
Total height [mm]:	2,500	2,575	2,720	3,045	3,130	3,610
Weight [kg]:	2,080	2,340	3,250	4,680	6,490	12,150



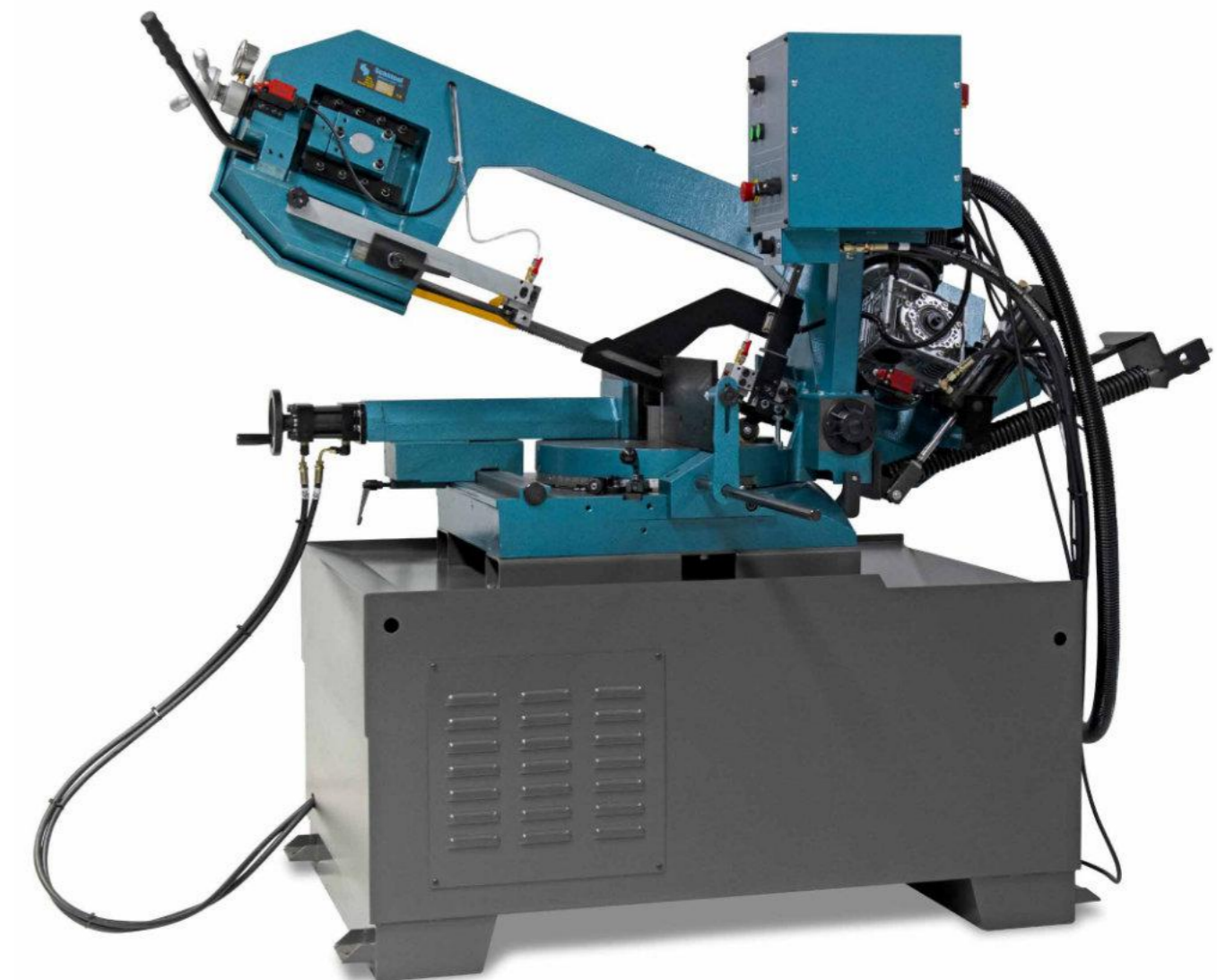
PROFI PUNCH MODEL		10 TON	16 TON
Technical Specifications			
Pressure force	[TN]	10	16
Motor Power	[kW]	2.2	2.2
Motor Rotational Speed	[rpm]	1400	1400
Rotational Speed of Shaft	[rpm]	35	9.8
Single work cycle of punch	[sec]	1.7	
Average Output	[punches / hour]	1600}	
Max Noise Level	[dB]	60	
Chain Transmission efficiency		0.95	
Chain Transmission Gear Ratio		2:1	
Total Length	[mm]	680	800
Total Width	[mm]	440	450
Total Height	[mm]	1214	1430
Weight	[kg]	190	350
Piston Stroke	[mm]		70



Bandsaw Model	220 GSHT	280 GSHT	320 GSHT SEMI	420 GSHT SEMI	220 GSHE	280 GSHE	320 GSHE
Article number	500712150	500712750	500712800	500712900	500712720	500712120	500712820
Technical Specifications							
Machine height (mm)	1,460	1,460	1,540	1,590	1,370	1,380	1,380
Machine length (mm)	1,100	1,200	1,400	2,250	1,280	1,420	1,420
Machine width (mm)	510	510	700	850	510	510	510
Motor (HP)	1	2	2	2	1	2	2
Net weight (kg)	180	200	390	600	180	205	205
Saw blade (mm)	2085 x 20 x 0.9	2450 x 27 x 0.9	2750 x 27 x 0.9	3320 x 27 x 0.9	2085 x 20 x 0.9	2450 x 27 x 0.9	2450 x 27 x 0.9
Saw speed (m/min)	40 to 80	35 to 70	Variable 20-90	30 to 90	20 to 83	20 to 83	20 to 83
Sawing capacity-45° (mm)	--	--	∅170 160 x 160 180 x 120	∅200 180 x 180 200 x 260	--	--	--
Sawing capacity 0° (mm)	∅180 180 x 180	∅225 200 x 200	∅255 240 x 240 310 x 230	∅300mm 260 x 260 330 x 200	∅180 180 x 180	∅225 200 x 200	∅255 240 x 240
Sawing capacity 45° (mm)	∅115 110 x 110	∅140 140 x 140	∅200 190 x 190 120 x 180	∅260 254 x 254 270 x 200	∅115 110 x 110	∅140 140 x 140	∅200 190 x 190
Sawing capacity 60° (mm)	∅70 70 x 70	--	∅115 115 x 115 115 x 115	∅180 170 x 170 170 x 170	∅70 70 x 70	∅90 90 x 90	∅115 115 x 115
Voltage	400V, 50 Hz, 3-Phase	400V, 50 Hz, 3-Phase	400V, 50 Hz, 3-Phase	400V, 50 Hz, 3-Phase	230V, 50 Hz, 1-Phase	230V, 50 Hz, 1-Phase	230V, 50 Hz, 1-Phase

Features

Metal Cutting Bandsaw	•	•	•	•	•	•	•
Swivel Head	•	•	•	•	•	•	•
Length Stop with Scale	•	•	•	•	•	•	•
Blade Tension Device	•	•	•	•	•	•	•
Blade Tension Meter	•	•	•	•	•	•	•
Blade Breakage Limit Switch	•	•	•	•	•	•	•
Manual Feed	•	•	•	•	•	•	•
Auto Feed - Manual	•	•	•	•	•	•	•
Auto Feed - Automatic	•	•	•	•	•	•	•
Auto Shut-off post cut	•	•	•	•	•	•	•
Variable speed control	•	•	•	•	•	•	•
Blade tension with limit switch	•	•	•	•	•	•	•
Quick release on vice	•	•	•	•	•	•	•
DC Motor w/ variable speed	•	•	•	•	•	•	•
Digital readout of blade speed	•	•	•	•	•	•	•
Cast Bow	•	•	•	•	•	•	•
CE Certified	•	•	•	•	•	•	•



Grinder Model	1600	1600X	50	50X	75	75X	75X Silverstar	100	100X	150	150X
Article number	416708110	416708210	430231120	430231220	430232130	430232230	439232230	430233140	430233240	430234140	430234240
Technical Specifications											
On Pedestal	•	•	•	•	•	•	•	•	•	•	•
Belt speed (m/sec)	28 / 33	28 / 33	30	30	30	30	30	30	30	30	30
Exhaust (m³/h)	--	--	--	630	--	630	630	630	630	--	630
Belt Width (mm)	50	50	50	50	75	75	75	100	100	150	150
Belt Length (mm)	1600	1600	2000	2000	2000	2000	2000	2000	2000	2000	2000
Grinding table (mm)	200	200	605	605	605	605	470	605	605	605	605
Machine height (mm)	1,390	1,390	1000	1000	1000	1000	1000	1000	1000	1000	1000
Machine length (mm)	680	680	1025	1025	1025	1025	1025	1025	1025	1025	1025
Machine width (mm)	330	330	500	500	500	500	600	500	500	600	600
Motor (HP)	2	2	4	4	4	4	4.1	5	5	5	5
Net weight (kg)	30	30	70	84	76	90	85	86	100	100	114
Number of spindle speeds	1	1	1	1	1	1	1	1	1	1	1
Rpm	2800 / 3300	2800 / 3300	2800 / 3300	2800 / 3300	2800 / 3300	2800 / 3300	2800 / 3300	2800 / 3300	3000	2800 / 3300	2800 / 3300
Voltage	400V, 50 Hz, 3-Phase	400V, 50 Hz, 3-Phase	400V, 50 Hz, 3-Phase	400V, 50 Hz, 3-Phase	220V, 50 Hz, 1-Phase	400V, 50 Hz, 3-Phase	400V, 50 Hz, 3-Phase	400V, 50 Hz, 3-Phase	400V, 50 Hz, 3-Phase	400V, 50 Hz, 3-Phase	400V, 50 Hz, 3-Phase
Wheel size, Contact wheel (ø mm)	200 x 50 x 19	200 x 50 x 19	200 x 50 x 42	200 x 50 x 42	200 x 75 x 42	200 x 75 x 42	200 x 75 x 20	200 x 100 x 42	200 x 100 x 42	200 x 150 x 42	200 x 150 x 42
Features											
EU Built (Denmark)	•	•	•	•	•	•	•	•	•	•	•
CE Certified	•	•	•	•	•	•	•	•	•	•	•
Exhaust system		•		•		•	•	•	•		•
With extra long grinding surface							•				
Separate emergency stop	•	•	•	•	•	•	•	•	•	•	•
Motor Brake	•	•	•	•	•	•	•	•	•	•	•
Quick Adjust	•	•	•	•	•	•	•	•	•	•	•
Quick belt change - Tool-less	•	•	•	•	•	•	•	•	•	•	•
5-year Motor Guarantee	•	•	•	•	•	•	•	•	•	•	•
Safety Features (Optimal)	•	•	•	•	•	•	•	•	•	•	•



BELT GRINDER AND POLISHING MODEL	CG Centerless Belt Grinder and polishing machines - SCANTOOL 75 CGX	CG Centerless Belt Grinder and polishing machines - SCANTOOL 75 CGX
ARTICLE NUMBER	430232237	430232137

Technical Specifications

With exhaust	✓	✓
Gear	NMRVOJO	NMRV030
Machine height(mm)	115	115 105
Machine length (mm)	106 70	70 4,1 80
Machine width (mm)	4,1	
Motor(HP}	90	6-120
Net weight{kg)		3x400/440V-50/60 Hz
Number of spindle speeds	6-120	50x150x25
Pipe dimension (mm)	3x4001440V-60160 Hz	
Voltage	50x150x25	
Wheel size, Drive wheel(mm)		



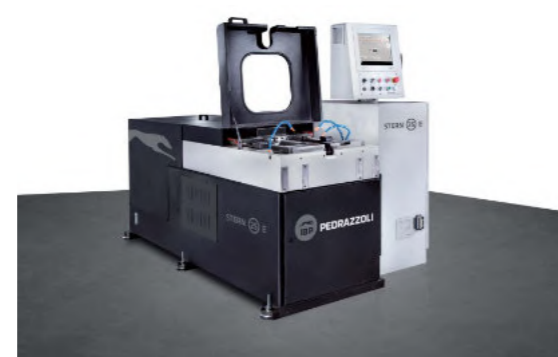
DEBURRING MODEL	Deburring machines - SCANTOOL 250AGM	Deburring machines - SCANTOOL 250AGM
ARTICLE NUMBER	388701005	390701005

Technical Specifications

Without exhaust	✓	✓
Machine height(mm)	1160	1160
Machine length (mm)	330	690
Machine width(mm)	640	640
Motor (HP)	3,0	3,0
Net weight (kg) Rpm	50	60
Voltage	3000	3000
Wheel size , Steel brush (mm)	3x400/440V-50/60 Hz	3x400/440V-50/60 Hz
Exhaust(m 5/h)	250x40x24	250x40x24 8.5



ENDFORMING MODEL	STERN BROWN 25	STERN BROWN 50	STERN BROWN 80	STERN BROWN 160
Technical Specifications				
Dimensions (L x W x H) [mm]	2400 x 1460 x 1700	2400 x 1460 x 1700	3100 x 1850 x 1700	3600 x 2200 x 1950
Weight [kg]	1800	2500	4500	9000
Intelligent Motion System (IMS)	V4	V4	V4	V4
Maximum end-form diameter [mm]	35	55	85	165
Maximum end-form length	170	170	250	250
Tool Revolving Carriage Capacity	15	15	12	12
End forming speed [mm/sec]	200	200	120	76
Positioning precision [mm/sec]	0.05	0.05	0.05	0.05
Work Unit Thrust Speed [kN] Clamp	0 to 80	0 to 150	250	500
Holding Force [kN]	120	0 to 230	380	750
Jaws Length [mm]	100	140	200	240
Jaw Opening Max [mm] Electrically	50	72	90	162
Controlled Axes Brushless Axes	3	3	3	3
Motors	Yes	Yes	Yes	Yes
Workstations that can be Motorised	15	15	12	12
Energy Saving - Green Operation	Yes	Yes	Yes	Yes
Multi-Operations in 1 Cycle Remote	Yes	Yes	Yes	Yes
Support	Yes	Yes	Yes	Yes
PC, Tablet, Smartphone Interface	Yes	Yes	Yes	Yes



FOLDING MODEL	Folding machine - Hand & foot - operated - SCANTOOL SCAN 13S	Folding machine - Hand & foot - operated - SCANTOOL SCAN 10S
ARTICLE NUMBER	541601350	5416011210

Technical Specifications

Without backgauge	✓	✓
Bending angle	135°	135°
Capacity(mm)	1020x2,5	1270x2,0
Machine height(mm)	1140	1140
Machine length{mm)	1360	1600
Machine width(mm)	800	900
Max. Opening(mm)	52	52
Netweight {kg)	310	340
Sheet thickness steel(mm)	2,5	2,0
Working lengthlmm)	1020	1270



GUILLOTINE MODEL	Scantool 1250-40 - GUILLOTINE SHEAR FOR METAL	Hand Lever Sheet Shear SCANTOOL TSX 1060	Scantool 2000-38 GUILLOTINE SHEAR FOR METAL	Scantool TSP150 PNEUMATIC GUILLOTINE SHEAR	Scantool TSP1300/2 PNEUMATIC GUILLOTINE SHEAR	Scantool TSP1300 PNEUMATIC GUILLOTINE SHEAR	Scantool TSP200 PNEUMATIC GUILLOTINE SHEAR
ARTICLE NUMBER	00761260	530711860	00762560	530601200	530601800	530601600	530601400

Technical Specifications

Manual Back Gauge	✓	✓	✓	✓	✓	✓	✓
Capacity (mm)	1275x4.0	1020x1,5	2025x3.0	1020x1,5	1335x2.0	1335x1.5	1335x2.0
Cutting Angle Cutting/min	2.15°	--	1,38°	--	3°	3°	3°
Machine height (mm)	40	--	38	--	14	21	15
Machine length (mm)	1500	1070	1500	1070	1300	1300	1300
Machine width (mm)	2100	2475	2900	2475	1680	1680	1380
Motor (kW)	2000	950	2000	950	1210	1210	1210
Net weight (kg)	4.0	--	4.0	--	--	--	--
Sheet thickness steel (mm)	1350	465	1750	465	310	280	250
Working length (mm)	4.0	1.5	3.0	1.5	2.0	2.0	2.0
Working width (mm)	1250	1020 --	1025	--	--	--	--
Normal Liter (air) percycle	--	--	--	1035	1335	1335	1035
Notching angle	--	-----	--	22	22	28	28
Pladeanslag (mm)	--	--	--	3+	3+	3+	3+
Side Stop (mm)	--	--	--	550	550	550	550
Tank Capacity (L)	--	--	--	200	200	200	200
Grinding Angles	--	--	--	60	76	73	63
	--	--	--	--	--	--	3°



Pillar Drill Model	SBM-28B Bench Model	SBM-28F	SBM-32F AUT
Article Number	06280005	06280000	06320000

Technical Specifications

Max.drilling capacity(mm):	28	28	28
Column Diameter (ø mm):	98	98	98
Spindle taper:	MT3	MT3	MT4
Tapping Capacity:	M16	M16	Steel: M16 / Cast Iron: M22
Spindle stroke(mm):	130	130	--
Distance Spindle to column (mm):	250	250	300
Distance Spindle to worktable(mm):	125 - 825	125 - 825	720
Distance Spindle to base(mm):	1,220	1,220	1,220
Spindle speeds range(rpm):	75 - 3200	75 - 3200	75 - 3200
Speed Numbers - Motor:	2	2	1
Motor (Kw):	1 Kw	1 Kw	1.5 Kw
Number of speeds:	12	12	--
Worktable size(mm):	380 x 380	380 x 380	460 x 460
Dimensions of base(mm):	360 x 535	360 x 535	620 x 450
Width of T-slot(mm):	14	14	14
Distance of T-slot base(mm):	160	160	160
Main motor (KW):	0.85 / 1.1	0.85 / 1.1	1.1 / 1.5 Kw
Dimensions (L×W×H)(mm):	380 x 620 x 2025	380 x 620 x 2025	620 x 450 x 2145
Packing Dimensions (L×W×H)(mm):	400 x 640 x 2100	400 x 640 x 2100	650 x 700 x 2200
Net/Packing Weight (Kg):	200 / 230	200 / 230	350/435
Adjustable table: Height & Angle	Yes	Yes	Yes
Moveable table	Yes	Yes	Yes
Cololant System:	--	--	Yes
Spindle Advance Handle	3 Spoke	3 Spoke	3 Spoke
Chuck guard with micro-switch	Yes	Yes	Yes
Separate emergency stop	Yes	Yes	Yes
Built-in working light	Yes	Yes	Yes
Drill Chuck Included:	16mm	16mm	16mm
Automatic Tapping:	Yes	Yes	Yes



Technical Specifications

Driven Rolls:	2	2	3	3	2	3
Roll Adjustment:	Manual	Manual	Hydraulic	Hydraulic	Hydraulic	Hydraulic
Flat Bar Hard Way [mm]:	50 x 10 to Ø800	60 X 10 to Ø900	60 X 10 to Ø800	60 X 10 to Ø800	60 X 10 to Ø900	70 X 12 to Ø1800
Flat Bar Easy Way [mm]:	80 x 15 to Ø700	80 X 15 to Ø700	80 X 15 to Ø600	80 X 15 to Ø600	80 X 15 to Ø700	70 X 20 to Ø1000
Square Solid Bar [mm]:	35 x 35 to Ø1400	35 X 35 to Ø1000	35 X 35 to Ø800	35 X 35 to Ø800	35 X 35 to Ø1000	45 X 45 to Ø1000
Round Solid Bar [mm]:	Ø30 to Ø700	Ø35 to Ø900	Ø35 to Ø700	Ø35 to Ø700	Ø35 to Ø900	Ø45 to Ø1000
Tube [mm]:	Ø50 x 2 to Ø800	Ø60 X 2 to Ø1100	Ø60 X 2 to Ø1000	Ø60 X 2 to Ø1000	Ø60 X 2 to Ø1100	Ø70 X 3 to Ø3000
Pipe Nominal Bore [mm]:	Ø33.7 x 2.6 to Ø900	Ø48.3 X 2.9 to Ø1000	Ø60.3 X 2.9 to Ø1000	Ø60.3 X 2.9 to Ø1000	Ø48.3 X 2.9 to Ø1000	Ø76.1 X 3.2 to Ø2500
Rectangle Tube [mm]:	50 x 30 x 3	50 X 40 X 3	60 X 30 X 3	60 X 30 X 3	50 X 40 X 3	70 X 30 X 3
Box Section [mm]:	40 X 40 X 3	40 X 40 X 3	45 X 45 X 3	45 X 45 X 3	40 X 40 X 3	50 X 50 X 3
Angle Leg Out [mm]:	40 X 40 X 5 to Ø400	50 X 50 X 5 to Ø800	50 X 50 X 5 to Ø600	50 X 50 X 5 to Ø600	50 X 50 X 5 to Ø800	50 X 50 X 5 to Ø700
Angle Leg In [mm]:	40 X 40 X 5 to Ø500	50 X 50 X 5 to Ø950	50 X 50 X 5 to Ø700	50 X 50 X 5 to Ø700	50 X 50 X 5 to Ø950	50 X 50 X 5 to Ø700
T-Section Leg Out [mm]:	50 X 5 to Ø800	50 X 5 to Ø700	60 X 5 to Ø700	60 X 5 to Ø700	50 X 5 to Ø700	70 X 5 to Ø700
T-Section Leg In [mm]:	50 X 5 to Ø950	50 X 5 to Ø900	60 X 5 to Ø900	60 X 5 to Ø900	50 X 5 to Ø900	70 X 5 to Ø900
T-Section Leg Up [mm]:	50 X 5 to Ø950	50 X 5 to Ø900	60 X 5 to Ø900	60 X 5 to Ø900	50 X 5 to Ø900	70 X 5 to Ø900
UNP Section Leg Out [mm]:	50 to Ø400	60 to Ø900	60 to Ø800	60 to Ø800	60 to Ø900	80 to Ø1200
UNP Section Leg-In [mm]:	50 to Ø500	60 to Ø1300	60 to Ø1200	60 to Ø1200	60 to Ø1300	80 to Ø1200
Shaft Diameter:	30 mm	50 mm	45 mm	45 mm	50 mm	55 mm
Motor:	1.5 HP	1.5 HP	5 HP.	5 HP.	3.5 HP	7 hp
Power [50 Hz]:	220V 1-Ph or 400V 3-Ph	220V 1-Ph or 400V 3-Ph	220V 1-Ph or 400V 3-Ph	400V 3-Ph	220V 1-Ph or 400V 3-Ph	400V 3-Ph
Shipping Weight:	254 Kg	290 Kg	450 Kg	180 Kg	330 Kg	538 kgs.
Specifcations:	Based on Mild Steel	Based on Mild Steel	Based on Mild Steel	Based on Mild Steel	Based on Mild Steel	Based on Mild Steel
Shipping Dimensions:	650 x 760 x 1420 mm	940 x 750 x 1400 mm	1200 x 770 x 1400 mm	1200 x 770 x 1400 mm	940 x 750 x 1400 mm	1300 x 890 x 1550 mm

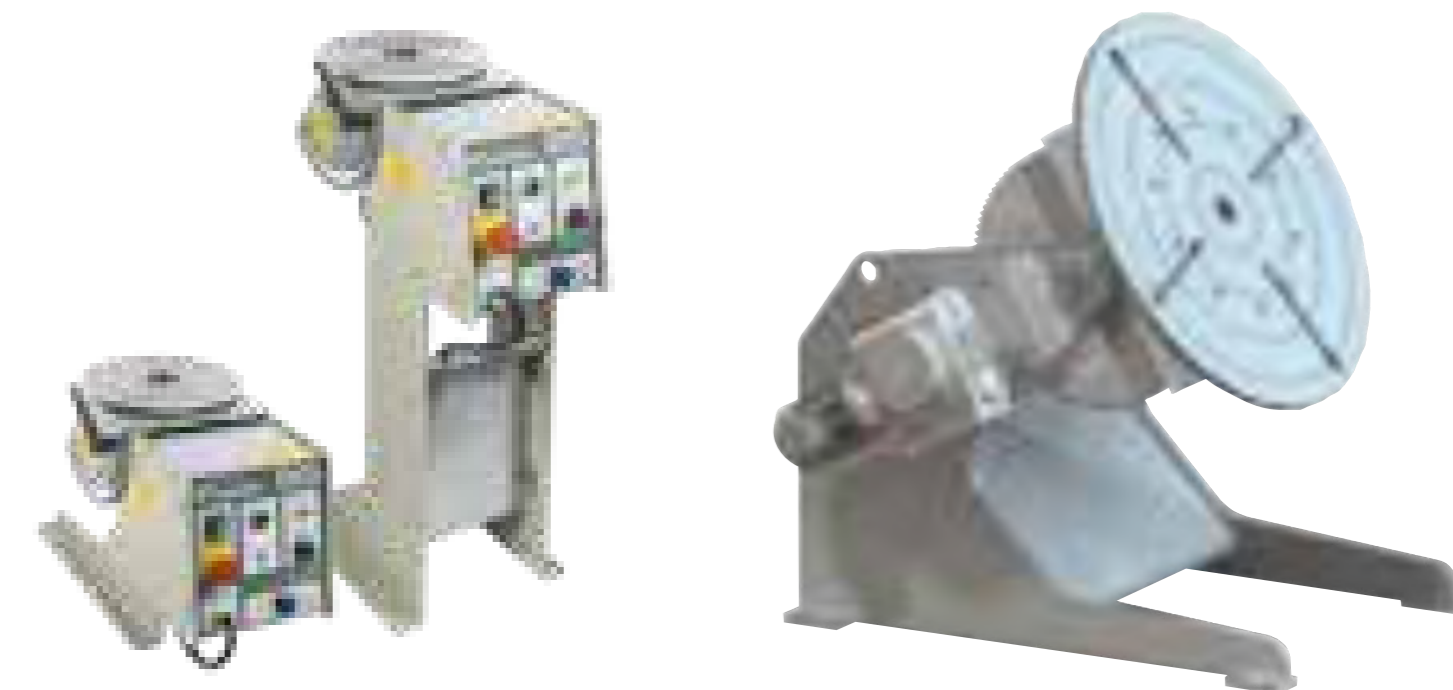
Plate/Slip Roll	MBR 2050 x 1.5	EBR 1050 x 1.5	EBR 1270 x 1.5	EBR 2050 x 1.0	EBR 1050 x 3.0	EBR 1270 x 2.5	EBR 2050 x 1.5	EBR 1050 x 2.2
Article number	500711019	500717001	500717004	500717006	500717003	500717005	500717007	500717002
Technical Specifications								
Drive Mechanism	Manual	Motorised	Motorised	Motorised	Motorised	Motorised	Motorised	Motorised
Capacity (mm)	2050 x 1.5	1050 x 1.5	1270 x 1.5	2050 x 1.0	1050 x 3.0	1270 x 2.5	2050 x 1.5	1050 x 2.2
Machine height (mm)	1,250	960	1,200	1,200	1,200	1,200	1,200	1,200
Machine length (mm)	3,080	2,000	2,250	2,650	2,000	2,250	2,650	2,000
Machine width (mm)	700	750	750	750	750	750	750	750
Min. Bending diameter (ø mm)	143	102	113	143	135	135	143	113
Motor (HP)	N/A	2	2	2	2	2	2	2
Motor (kW)	N/A	2	2	2	2	2	2	2
Net weight (kg)	650	325	385	780	450	420	800	360
Roller diameter (ø mm)	95	68	75	95	90	90	95	75
Roller speed (m/min.)	N/A	6	6	7	6	6	7	6
Sheet thickness steel (mm)	2	2	2	1	3	3	2	2
Voltage	N/A	400V, 50 Hz, 3-Phase	400V, 50 Hz, 3-Phase	400V, 50 Hz, 3-Phase	400V, 50 Hz, 3-Phase	400V, 50 Hz, 3-Phase	400V, 50 Hz, 3-Phase	400V, 50 Hz, 3-Phase
Working length (mm)	2,050	1,050	1,270	2,050	1,050	1,270	2,050	1,050
Features								
Castiron framework	•	•	•	•	•	•	•	•
Main motor with brake		•	•	•	•	•	•	•
Rotatable top roller	•	•	•	•	•	•	•	•
Motor-powered centralized rollers		•	•	•	•	•	•	•
Wire grooves	•	•	•	•	•	•	•	•
Portable Foot Control		•	•	•	•	•	•	•
CE Certified	•	•	•	•	•	•	•	•
Rollers: SAE 1050 Steel	•	•	•	•	•	•	•	•



Tube / Pipe Notcher	75RB	150RB	100RS	100RSX	150RS	150RSX
Article number	430232145	430234156	700681000	700684000	700681500	700681550
Technical Specifications						
On Pedestal	Yes	Yes	--	--	--	--
Exhaust System	No	No	No	Yes	No	Yes
Exhaust (m3/h)	--	--	--	600	--	600
Grinding angles	0 to 60°	0 to 60°	--	--	--	--
Grinding belt (mm)	75 x 2250 / 75 x 2000	150 x 2250 / 150 x 2000	100 x 1600	100 x 1600	150 x 1600	150 x 1600
Grinding table (mm)	75 x 605	150 x 605	--	--	--	--
Wheel size, Drive wheel (ø mm)	--	--	200x100x28	200x100x28	200x100x28	200x100x28
Machine height (mm)	1,020	1,020	1,350	1,350	1,850	1,850
Machine length (mm)	1,350	1,350	1,430	1,430	2,350	2,350
Machine width (mm)	570	570	810	810	810	810
Motor (HP)	4	5	4	4	4	4
Net weight (kg)	116	140	220	205	220	225
Number of spindle speeds	1	1	1	1	1	1
Tube/Pipe Capacity (ø mm)	17-70	17-100	21-76	21-76	21-100	21-100
Rpm	2800 / 3300	2800 / 3300	1400 / 1700	1400 / 1700	1400 / 1700	1400 / 1700
Cutting speed (m/min)	30	30	--	--	--	--
Voltage	400V, 50 Hz, 3-Phase	400V, 50 Hz, 3-Phase	400V, 50 Hz, 3-Phase	400V, 50 Hz, 3-Phase	400V, 50 Hz, 3-Phase	400V, 50 Hz, 3-Phase



WELDING TURNTABLES MODEL	D53/ 25 D53/ 70	D102/60 D102/150	D 302/60 D 302/150	D 653	D1003 D1004	D 5002
Technical Specification						
Load Capacity(vertical)	50 kg/0.5 kN	100kg/1.0 kN		650kg/6.5 kN	1000kg/10 kN	5000kg/50 kN
Speed RPM	0.25 – 2.5 min ⁻¹ 0.70- 9.0 min ⁻¹	0.1 - 10 min ⁻¹	0.05- 5 min ⁻¹	0.075 - 3.26 min ⁻¹	0.027 - 1.2 min ⁻¹	0.002 - 1.1 min ⁻¹
Torque	2.5- 15 Nm 2.5- 10 Nm	15- 50 Nm	30- 100 Nm	700 Nm	1025 Nm	5000 Nm
Faceplate diameter	250 mm	400 mm		920 mm		1000 mm
Table height: low: high:	320 mm 800 mm	400 mm 750 mm		970 mm	895 mm	1444 mm
Axle height: low: high:	270 mm 750 mm	320 mm 670 mm		825 mm	736 mm	1275 mm
Spindle bore	10 mm	60 mm		47.5 mm	56 mm	60 mm
Large bore option	-	150 mm				
Centralising bore (chuck or jig mount)	∅50H7 3 mm deep	∅78H7 3 mm deep (version 60)		∅64H7 3 mm deep		∅64H7 20 mm deep
for D102/150 - D302/150	-	∅154H725 mm deep (version 150)				
Tilting angle - faceplate	135°					
Tilting operation	manual lockable	manual lockable		motor driven v=4.4°/s	motor driven v=6.3°/s	hydraulic
Tilting moment	90 Nm	130 Nm		1100 Nm	3000 Nm	31750 Nm
Max. rotating dia low: high:	450 mm 1340 mm	490 mm 1160 mm		1400 mm		2400 mm 2000 mm b. ext.
Current collector	400 A (34 V) 80% d.c.			400 A	800 A	1200 A
Mains voltage	230 V / 240 V				3 x 400 V	
Frequency	50 / 60 Hz				50 Hz	
Mains connection cable	3 x 2.5 mm ² , 5 m with Schuko plug			5 x 2.5 mm ² , 5 m with CEE-plug 16 A		5 x 4 mm ² , 5 m with CEE-plug 32 A
Interface for external operation	Foot switch, hand and foot remote					
Speed control range	1:10	1:100		1:43.5	1:40	1:550
Limit switchoverlap 360° + overlap	no			option		
Weight low: high:	33 kg 44 kg	55 kg 65 kg	56 kg 66 kg	420 kg	550 kg	2200 kg

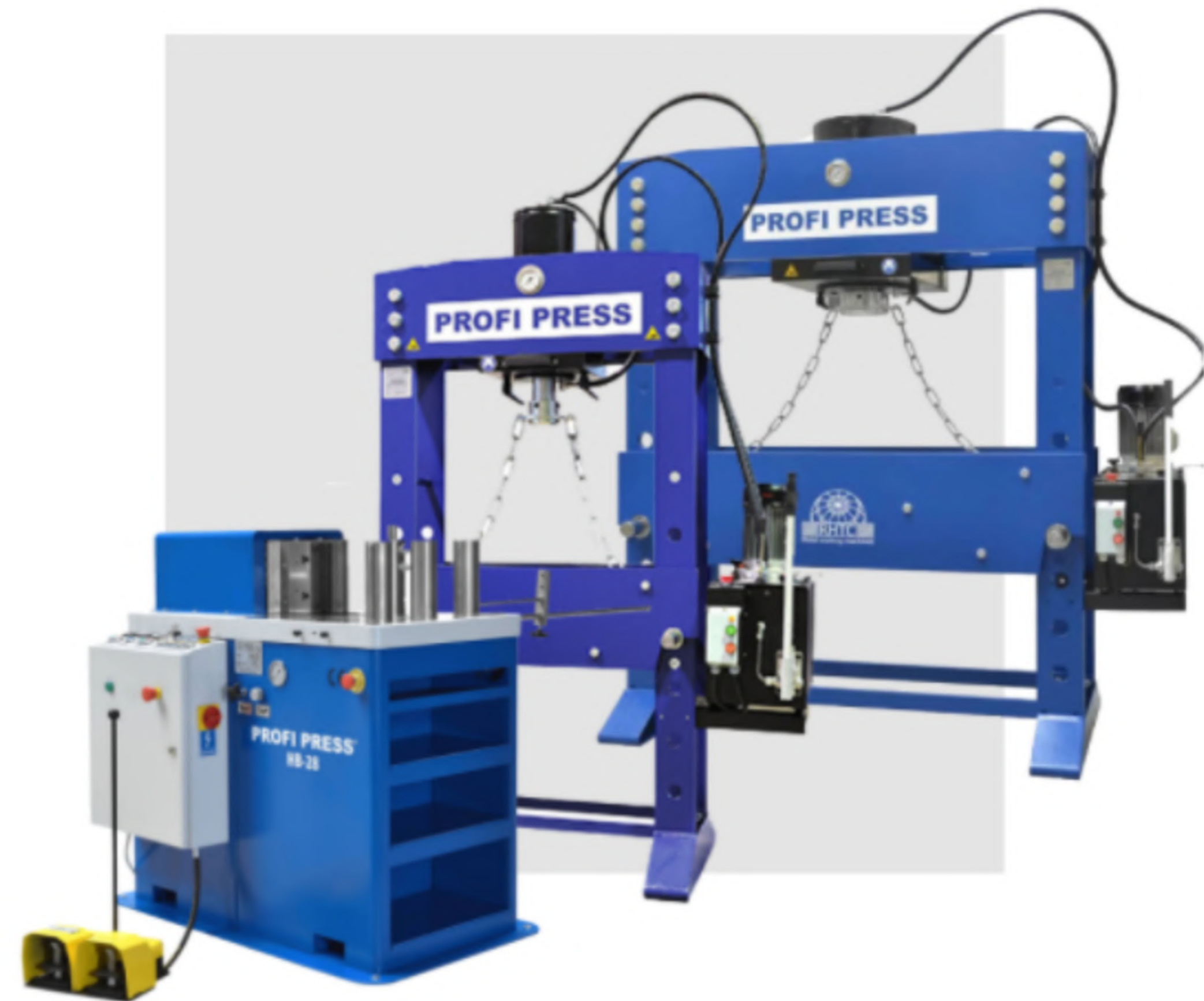


WORKSHOP PRESS

Metalworking Machinery Specialists

**WORKSHOP PRESS IS A UK BASED COMPANY
SELLING ONLY TOP-QUALITY METAL FABRICATION
EQUIPMENT TO THE UK AND THE WORLD.**

Our staff is experienced, has worked in industry, and understands the machinery they are selling and are not just selling from a book. All sales, support, and service are UK based. We hold stock of a wide variety of machines so contact us today to discuss your application.



WORKSHOP PRESS

Metalworking Machinery Specialists

BRANDS WE SUPPLY:



UNSURE ABOUT THE RIGHT MACHINE FOR YOUR NEEDS?

Our team is made up of industry professionals who have worked with metalworking machinery and can properly advise you on what machine is suitable for your needs, requirements and applications.

